

UTSA[®]

The University of Texas
at San Antonio[™]

Charting UTSA's Future

College of Engineering
Advisory Council
April 5, 2018



The logo for the University of Texas at San Antonio (UTSA) is located in the upper left corner. It consists of the letters "UTSA" in a bold, white, sans-serif font. Above the text are three wavy lines: a top orange line and two blue lines below it. The entire logo is set against a dark blue background with a decorative, wavy white border on the left side.

UTSA[®]

UTSA as a Catalyst for San Antonio

San Antonio's University



Boston has eight Carnegie R1 universities



**Boston has eight
Carnegie R1 universities**



Imagine in 10 Years...

- **NRUF/Carnegie R1**
- **> 45,000 students**
- **> 2,000 faculty**
- **\$400M in research expenditures**
- **Endowment of \$500M**
- **300 endowed chairs/ professorships**
- **A destination of choice for students**
- **Urban-serving**
- **Hispanic-thriving**
- **3M square feet of new construction across 3 campuses**
- **25 annual faculty prestigious awards**
- **15 faculty in the national academies**
- **Commensurate athletics conference membership**

The logo for UTSA (University of Texas at San Antonio) is located in the upper left corner. It consists of the letters "UTSA" in a white, bold, sans-serif font. Above the text are three wavy lines: a top orange line and two blue lines below it. The entire logo is set against a dark blue background with a white scalloped edge on the left side.

UTSA®

Six Themes to Chart our Course



**1. A Great
Multicultural
Discovery
Enterprise**



**2. An
Exemplary
Urban-Serving
University of
the Future**



**3. World
Engaged**



**4. Fostering
Exceptional
Student
Experiences**



**5. Cultivating
the Excellence
of our People**



**6. Operational
and
Infrastructure
Excellence**



Discovery
Enterprise

Urban
Serving

World
Engaged

Student
Experience

People
Excellence

Process
Excellence

Initiatives

Presidential | Strategic | Tactical | Operational

Projects

Project Teams | Project Management | KPIs | OPIs



UTSA[®]

Peer Models of Excellence

Peer Models of Excellence

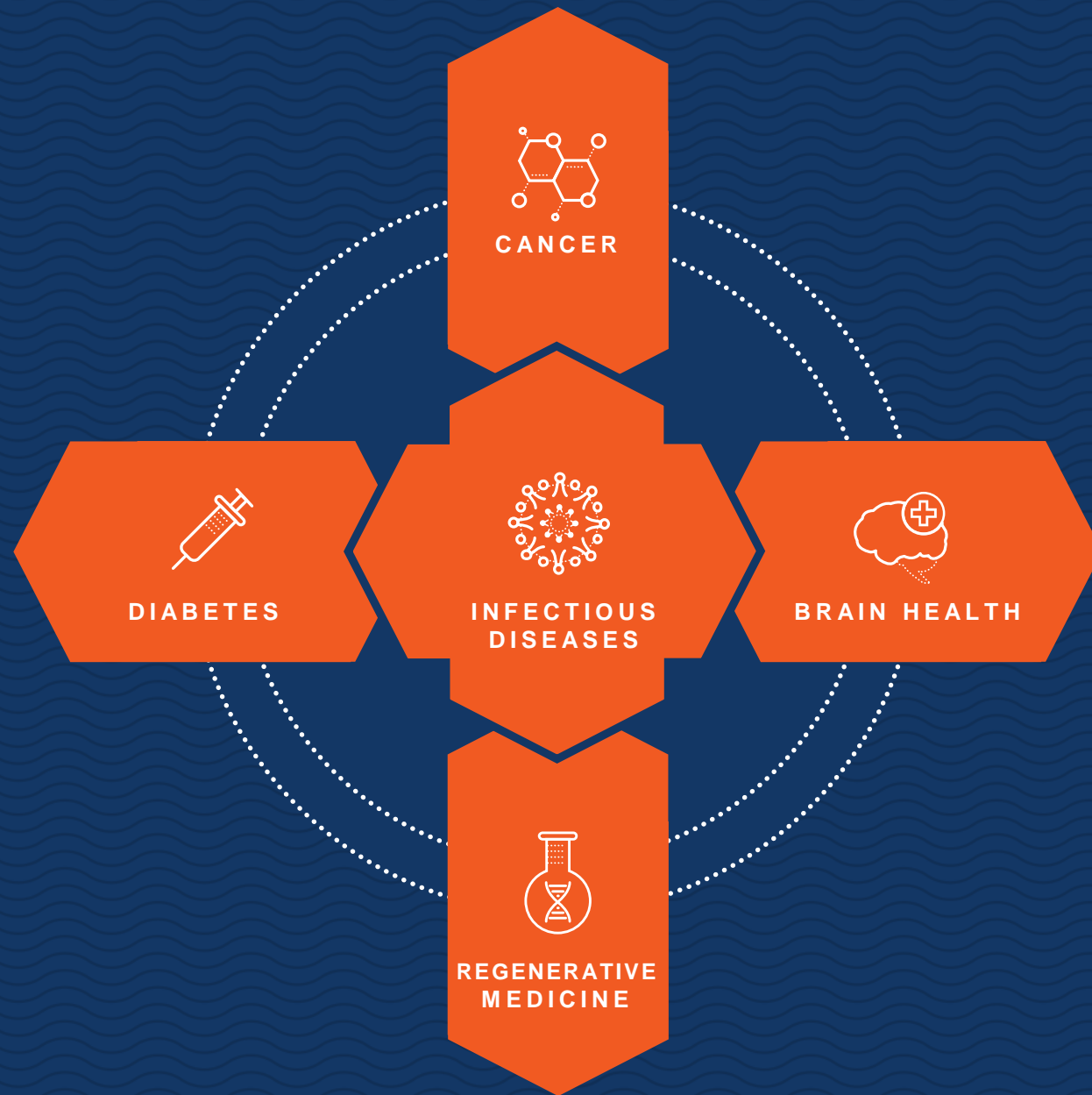




UTSA®

Positioning UTSA as a National Leader in Biomedical Research & Development

Alignment with
San Antonio's
Bioscience Sector



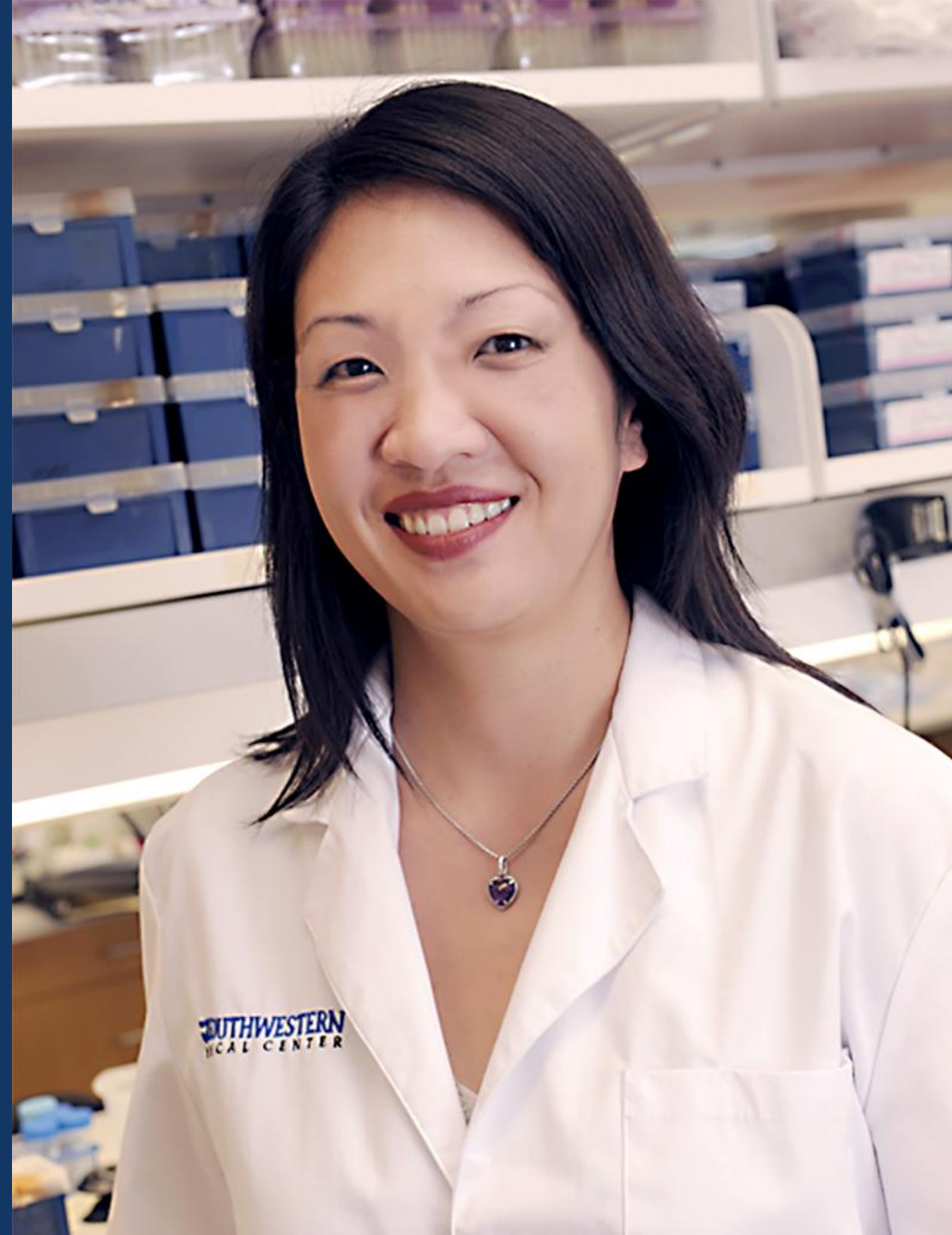


Dr. Jenny Hsieh

Semmes Foundation Chair in Cell
Biology

Professor of Biology

Fighting Brain Disease



A New Partnership Emerging

UTSA



UT Health
San Antonio



**TEXAS BIOMEDICAL
RESEARCH INSTITUTE**



SOUTHWEST RESEARCH INSTITUTE



BAMC

San Antonio has

3,300+

MDs and PhDs

and more than

\$1 billion

in federal R&D
expenditures





San Antonio and its population genomics is the future of medicine

Precision Medicine

Drug Discovery and Delivery

Regenerative Medicine

Obesity

Neurodegenerative Disorders

Infectious Diseases





UTSA®

Creating a Cyber Ecosystem at UTSA



UTSA's Current & Future National Security Portfolio

Cybersecurity
& Cloud Computing

Counter Terrorism

Election Security

Cyber Attack/
Deterrence & Policy

Infectious Diseases
& Biological Threats

Military Health
& Wellness

Demographic Methods
& Trends

Governance & Policy

Emergency Management
& Communications

Border & Refugee Issues

Advanced Materials

Nanotechnology

Critical Infrastructure
Protection

Robotics & UAVs

Analytics

High Performance
Computing

Artificial Intelligence

Machine Learning

Data Visualization

High Tech Intelligence



Dr. Nicole Beebe

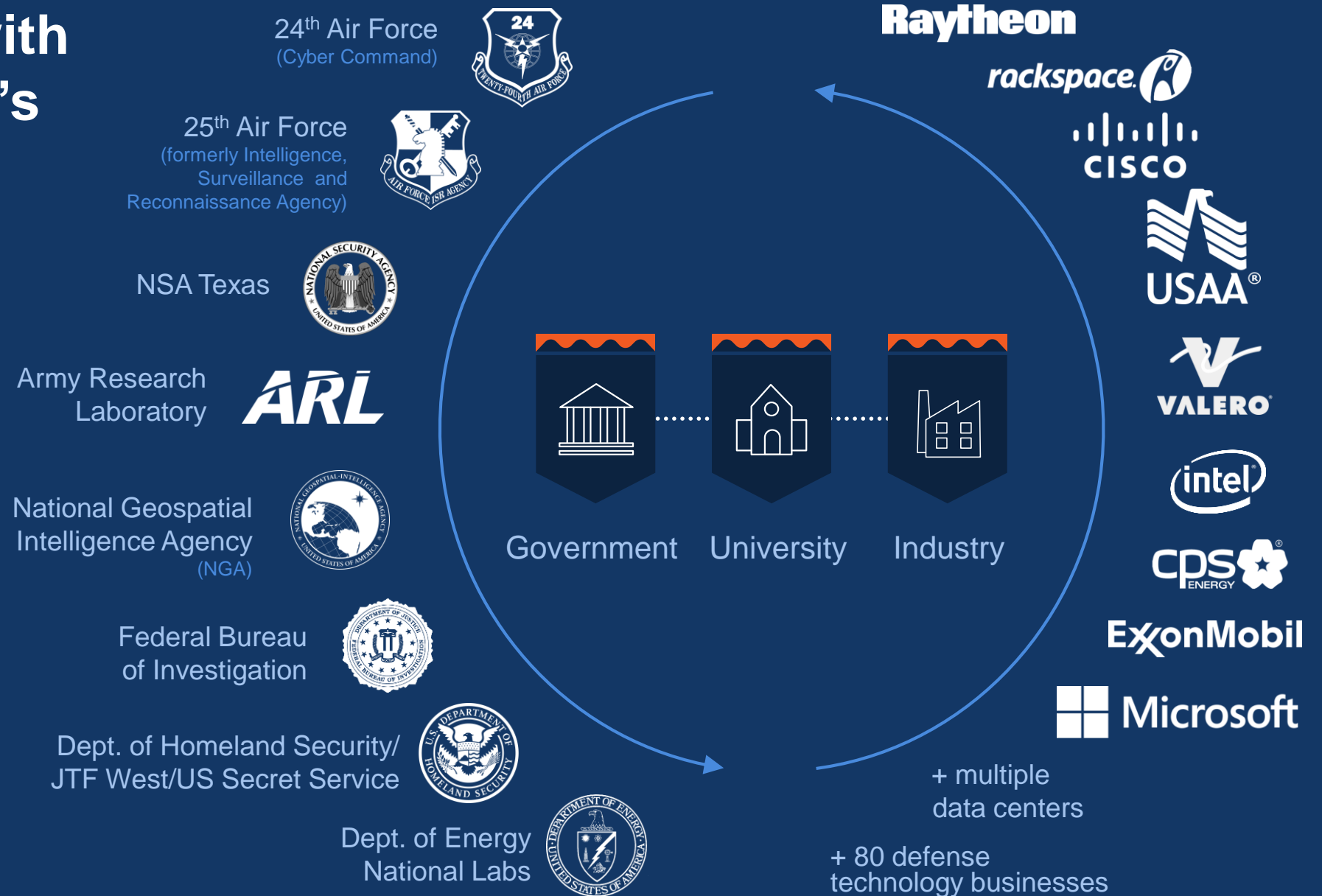
Melvin Lachman Distinguished
Professor in Entrepreneurship

Associate Professor of Information
Systems and Cyber Security

A Leader in the
Cybersecurity Revolution



Alignment with San Antonio's National Security Landscape



100,000
square feet

5 floors

Computational Research Building

UTSA

IPSECURE

Microsoft

Loki Labs

Raytheon

BUILD SEC
FOUNDRY

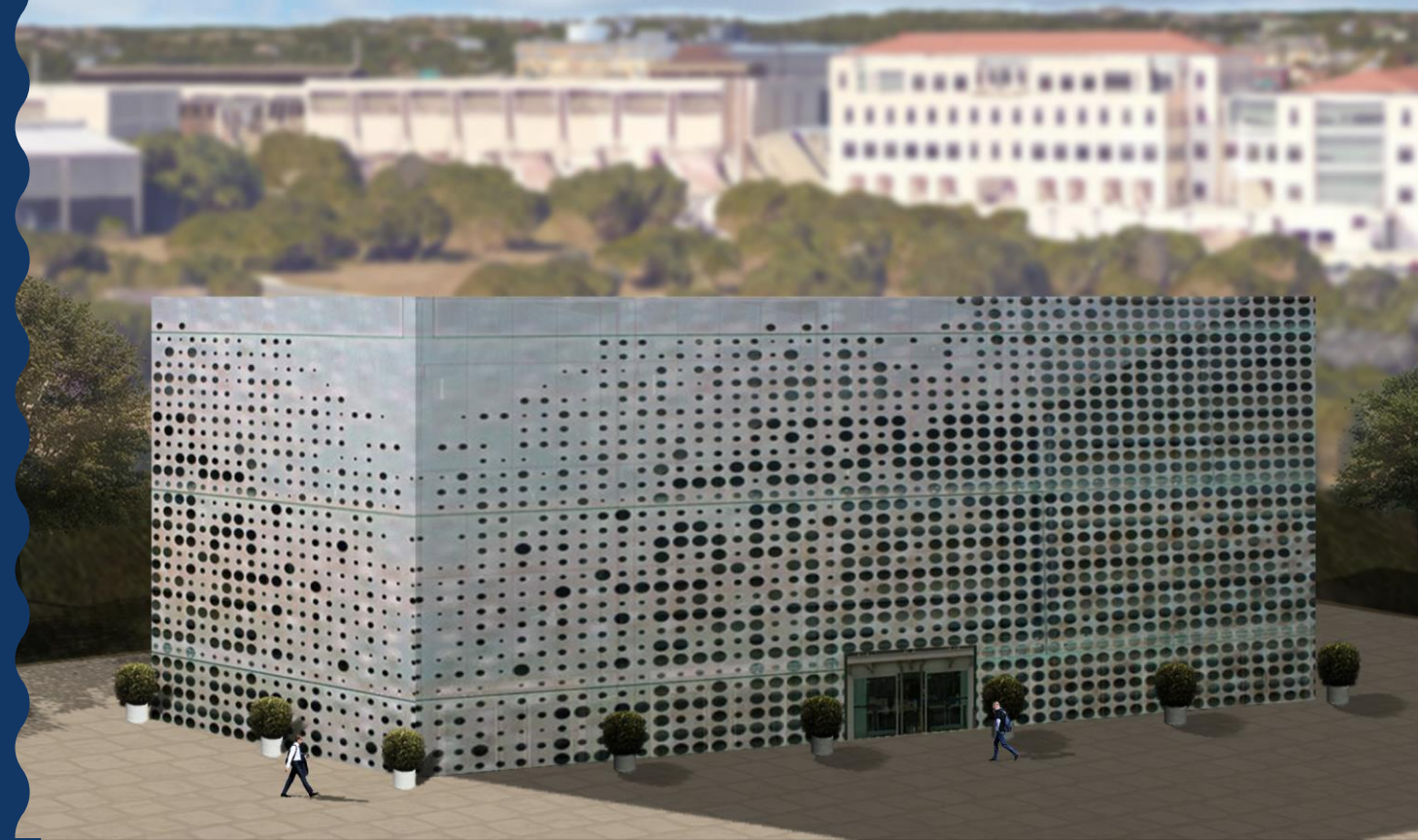
LGS
INNOVATIONS

noblis

POLARIS
—ALPHA—

IOMAXIS

*In late stage discussions
with 7 additional companies*





UTSA®

A Visionary Downtown Campus



A New
Vision



UTSA®

School of Data Science

School of Data Science

Centralizing UTSA's talent and resources in cyberscience, data science and data management into one powerful new school.

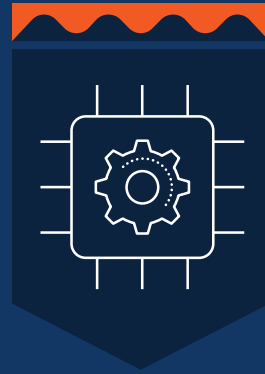


Columbia University
Data Sciences Institute

Departments of
Computer Science &
Computer Engineering



Department of
Statistics and Data Science



Department of Information
Systems & Cyber Security



The Center of Infrastructure
Assurance & Security



The Cyber Center for
Security and Analytics



The Institute for
Cyber Security



The Open Cloud
Institute



The Texas Sustainable
Energy Research Institute

The logo for UTSA, featuring the letters "UTSA" in a bold, white, sans-serif font. Above the text are three wavy lines: a top orange line and two blue lines below it. The logo is positioned on the left side of the slide, which has a dark blue background with a white scalloped edge on the far left and several horizontal wavy lines in blue and orange.

UTSA®

School of Entrepreneurship & Technovation

School of Entrepreneurship & Technovation

Nurturing the big ideas that
transform our world.



University of Utah
Lassonde Entrepreneur Institute

Degree programs and professional certificates



Prototype labs



Entrepreneurship incubators



Creative spaces for startups, collaboration



Living/learning facilities



Meetups and workshops



Business model competitions



Commercialization programs



Innovation bootcamps



UTSA®

Urban Education Institute

Urban Education Institute

Tackling the grand challenges surrounding urban education through innovative partnerships and clinically rich approaches to school professional preparation.



University of Chicago
Urban Education Institute

Urban Education Institute



High quality research
impacting education
policy and practices



Development of a
University Lab School



Partnerships
with K-12 and
community
organizations



Leadership
development



Residential experiences
for undergraduate and
graduate students,
connecting theory
to practice



Policy studies



UTSA[®]

Urban Science Institute

Urban Science Institute

Driving public policy and the
future of San Antonio.

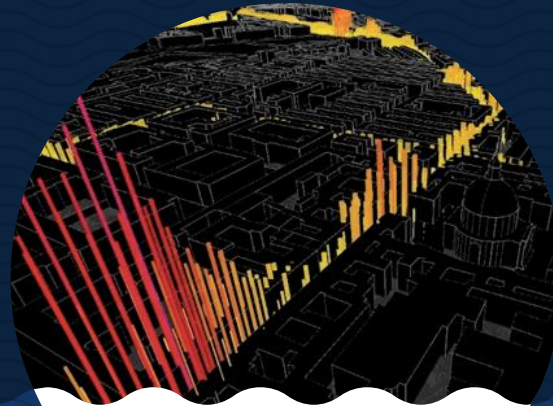


New York University
Center for Urban Science & Progress

University of Chicago
Urban Center for
Computation and Data

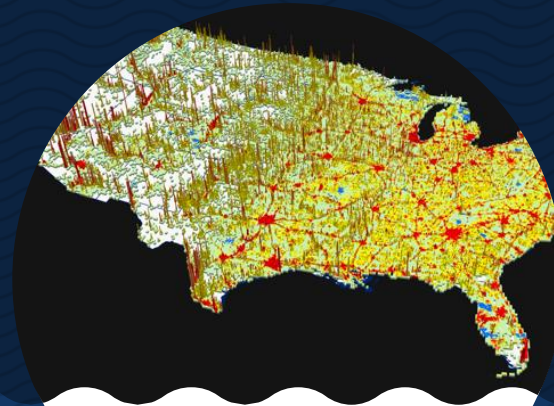


MIT
Senseable City Lab



senseable city lab:::

ORNL
Urban Dynamics
Institute



NYU
Center for Urban Study
and Progress



Let's Chart the Future Together

UTSA[®]

The University of Texas
at San Antonio[™]

